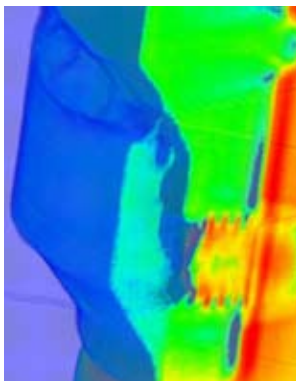


About Battelle

Battelle is the world's largest nonprofit independent research and development organization. Battelle advances scientific discovery and application by conducting \$4 billion in global R&D annually through contract research, laboratory management, and technology commercialization.



RIC Capabilities

Battelle has the expertise and equipment needed to provide the information and images for your engineering, quality, or investigational analysis. We can provide images ranging from simple 2-D radiographs to complex 3-D renderings with varying levels of transparency. We also can provide detailed cross-sectional views and export surfaces to a 3-D CAD model. Such files can then be applied in a variety of modeling and rapid prototyping tools.

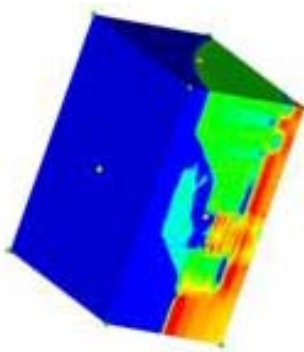
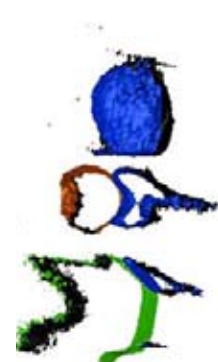
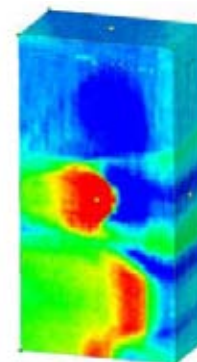
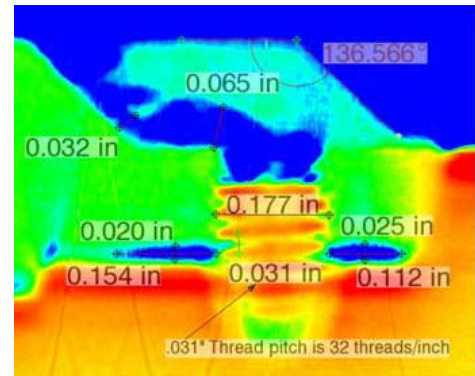
Battelle's Radiographic Imaging Center (RIC) has the range of expertise and X-ray computed tomography (CT) equipment to optimize image quality and analysis to meet your specific needs.

The micro-focus system allows us to resolve details down to 50 microns, or 0.002 inch. We also can penetrate steel items up to 1 inch thick while still resolving 250 microns or 0.010 inch.

The high-power system allows us to penetrate thicker/higher-density objects. The system is capable of imaging items with up to 2.5 inches of steel and resolving items as small as 500 microns or 0.020 inch.

The RIC at Battelle can provide radiographic imaging of areas as large as 7 inches wide by 9.3 inches high. A 2-D image can be somewhat larger than this. However, other services, such as a 3-D reconstruction must have images smaller than 6 inches across at the widest point. The item can be longer than 9 inches, but we can image only 9 inches of length at a time. The need to rotate the object and maintain it within the imaging area creates such dimensional restrictions.

Please contact us so we can help determine the services that best meet your needs.



Contact Information

Lab E-mail

xray@battelle.org