



MARQUIS

Jared Walker
Marquis Management
Director of Carbon Removal

An aerial photograph of an industrial facility, likely a refinery or chemical plant. The foreground features a large, dark body of water, possibly a reservoir or cooling pond, with a grassy embankment. In the middle ground, a modern, multi-story office building with a grey facade and large windows is situated on a paved area with several cars parked. Behind the office building, the industrial complex is dominated by numerous large, cylindrical storage tanks, some with red piping and scaffolding. In the background, there are more industrial structures, including tall chimneys emitting white smoke, and a dense line of green trees under a clear blue sky.

Outline

1- Marquis History

2- Marquis Industrial Complex

3- Current Projects

4- Future path



1975 Trucking
Commodities &
Founding of Marquis
Grain



1985 Crop Input
Marketing, Retailing
and Services



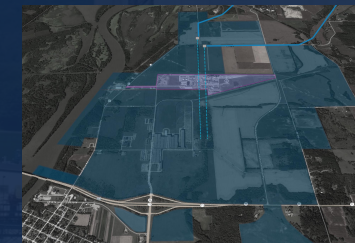
1999 Liquid Tank
Terminals



2005 Ethanol



2018 ProCap and
ProCap Gold



2022 Marquis
Industrial Complex



1976 Corn
Procurement



1994 Importing and
Wholesaling Crop
Fertilizers



2000 Steel Barging
(Scrap and Coil)



2010 Crude Oil
Transportation,
Terminals and
Logistics



2020 Contract
Manufacturing of
Consumer Products



1979 Grain
Commodity Hedging



1995 Liquid Barging

1975

1980

1985

1990

1995

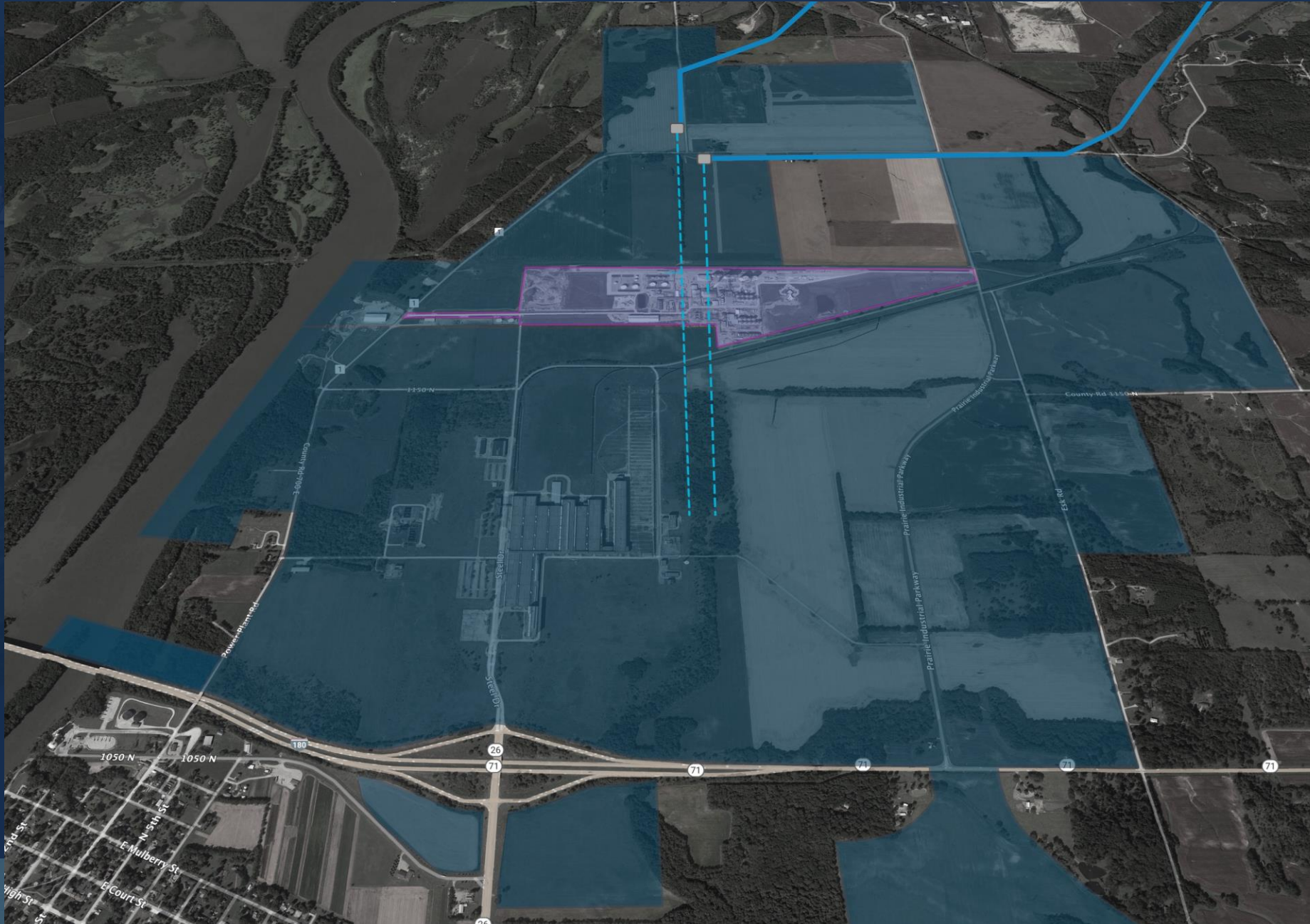
2000

2005

2010

2020

2022

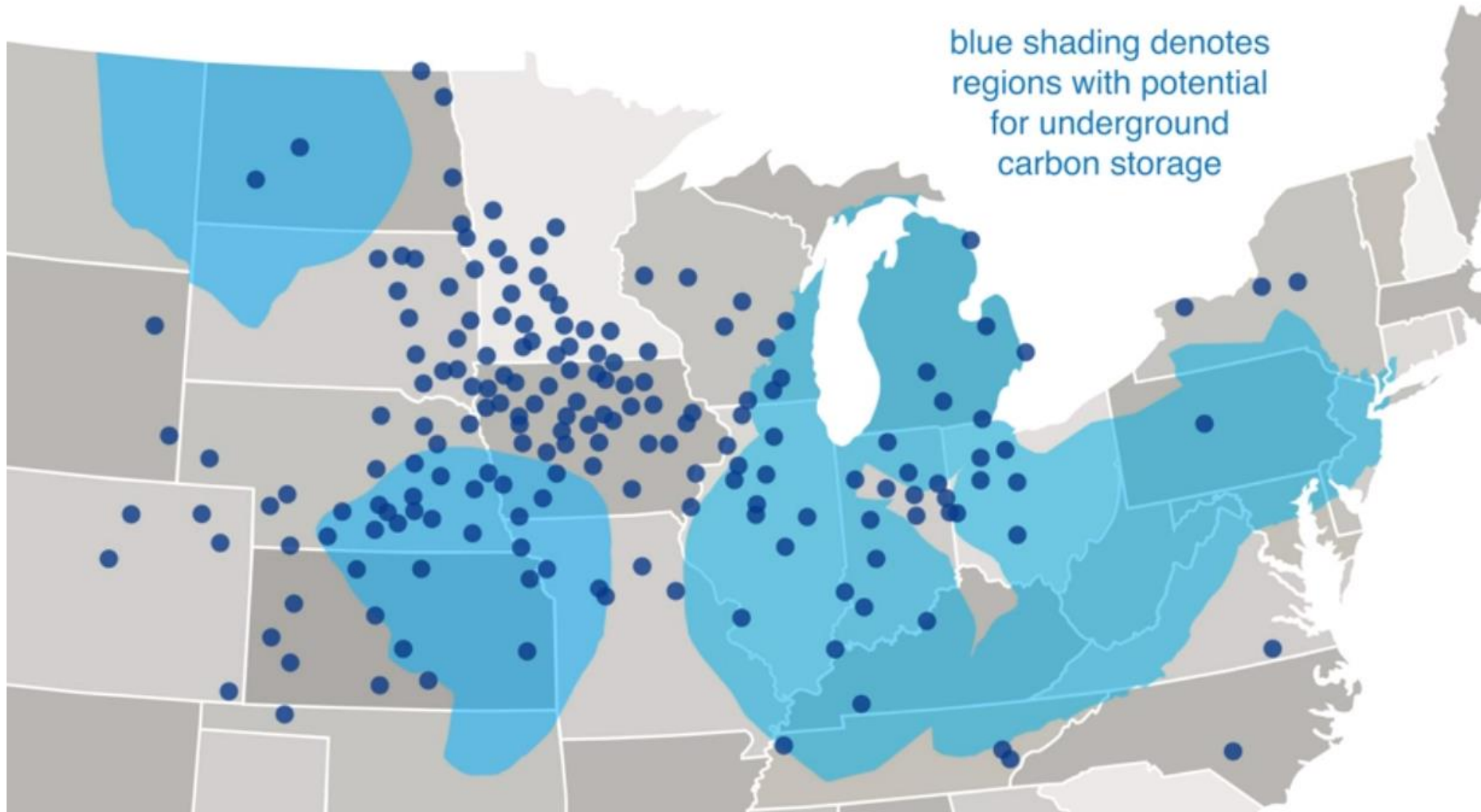


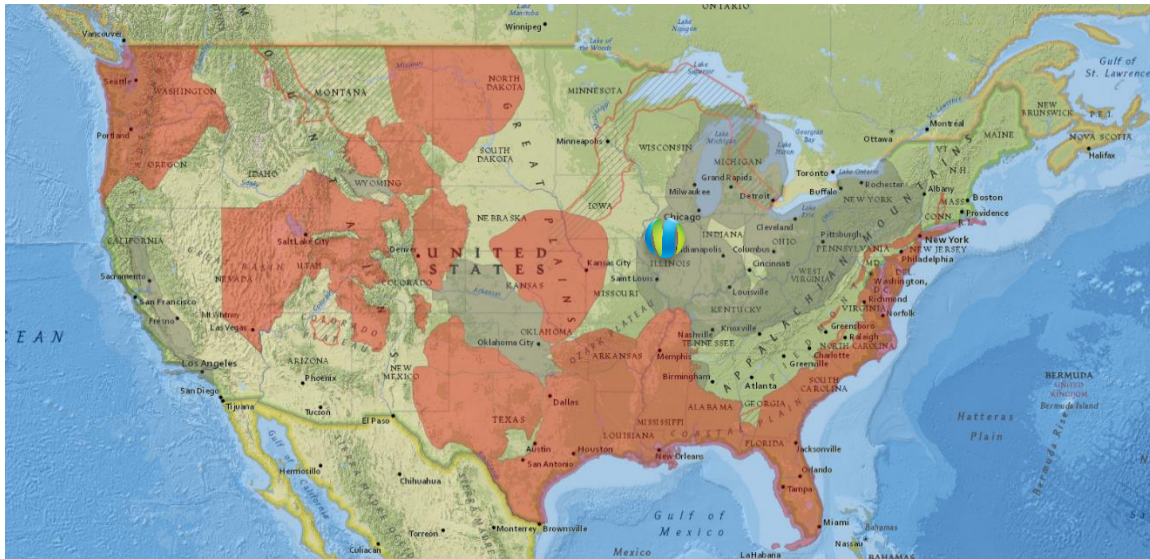
“Marquis Industrial Complex to be the world’s first carbon-neutral industrial complex with on-site carbon injection.”

Vision: To bring together zero and low carbon industries that share our vision of being good places to work.

The Perfect Storm

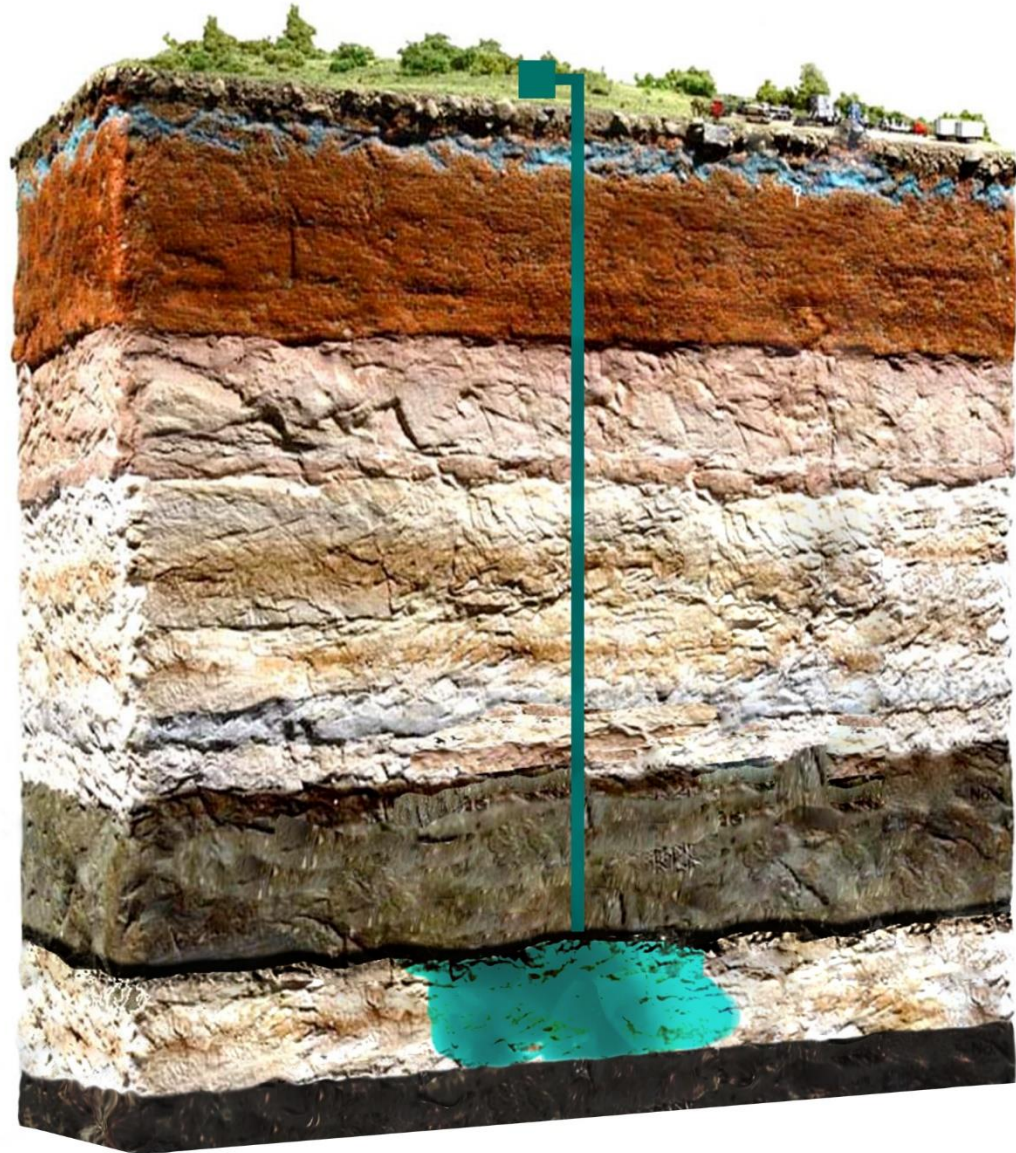
- Two Natural Gas pipelines
- Major Power Lines
- Rail Transport
- Truck Transport
- Barge Transport
- 3300 Acres owned
- More than 5000 acres with pore space rights procured





<https://co2public.er.usgs.gov/viewer/>


capstone layer capable of permanently trapping CO₂ below
saline sandstone formation
sequestration depth is typically 3,000 to 5,000 feet
basement rock



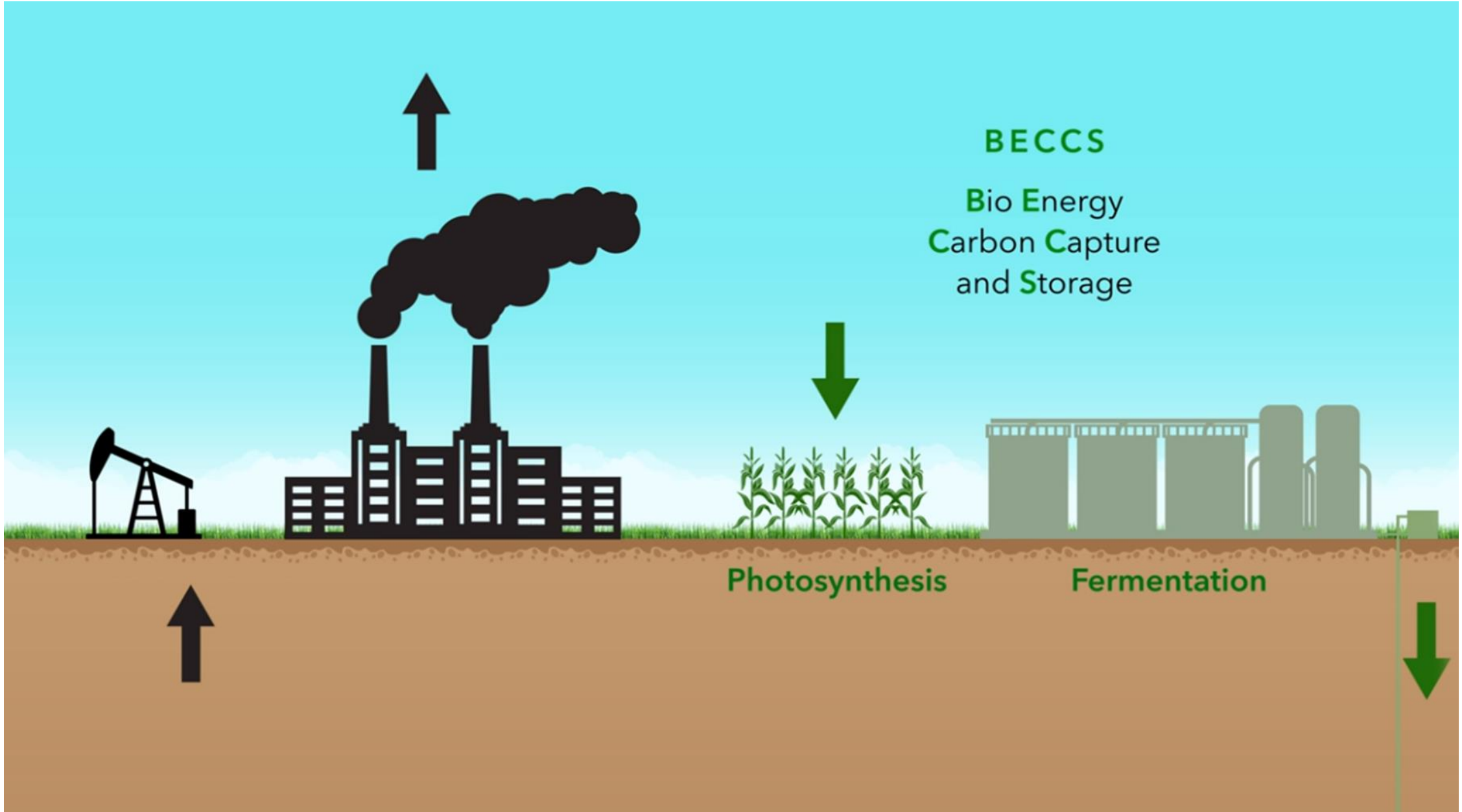
An underwater scene with sunlight rays filtering through the water from the top. A large school of fish is swimming in the lower half of the frame. The text "LOW CARBON INTENSITY" is overlaid in the center.

LOW CARBON INTENSITY

Current Projects

- 
- Carbon Capture and Storage from Ethanol
 - Understanding and Measuring CI from farming practices, plant efficiencies, transportation, etc.
 - Continued diversification
 - “You have to be in the black to be green”

Marquis Carbon





BECCS

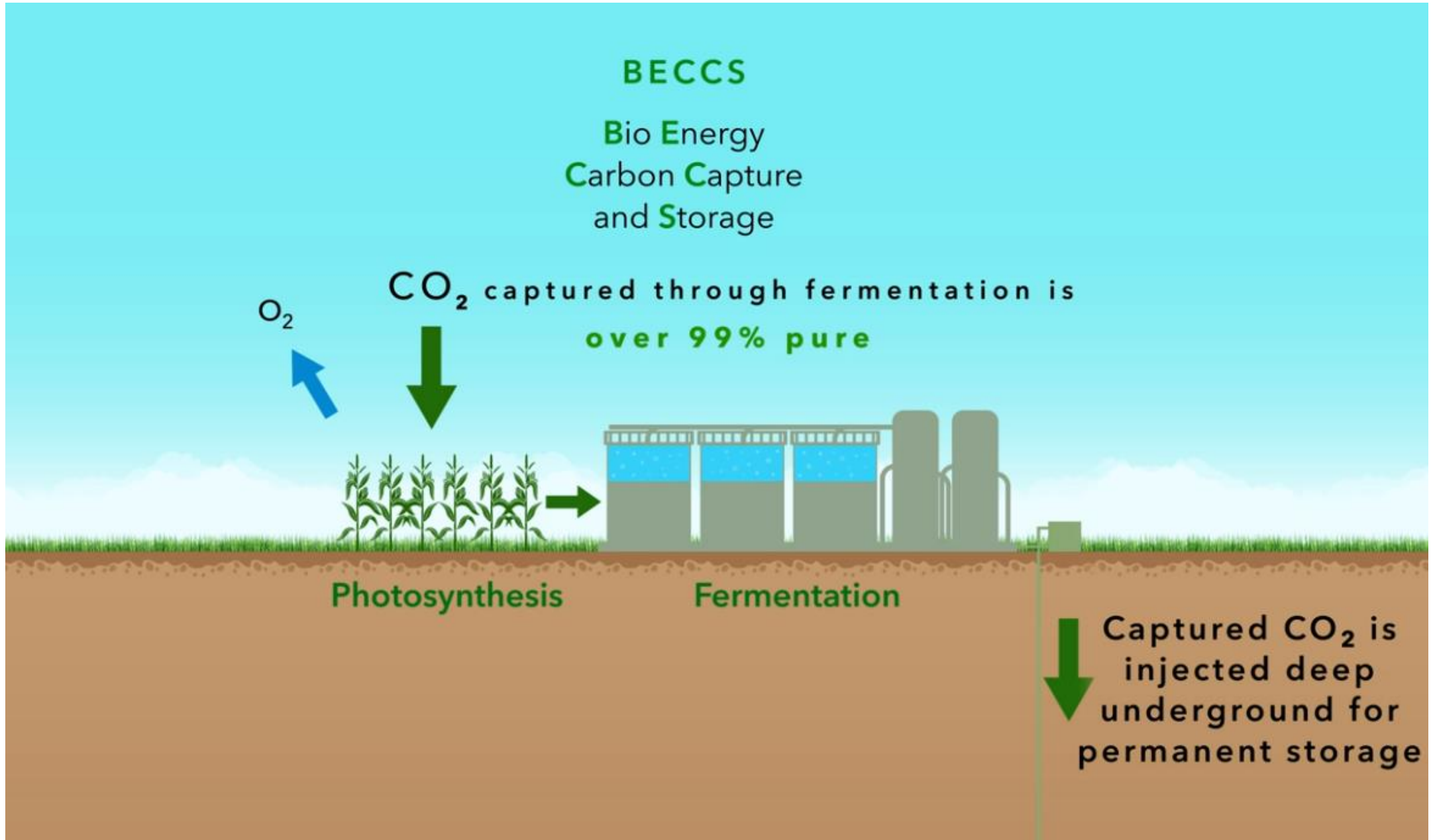
Bio Energy
Carbon Capture
and Storage

O_2 CO_2 captured through fermentation is
over 99% pure

Photosynthesis

Fermentation

Captured CO_2 is
injected deep
underground for
permanent storage





BECCS Project Timeline

- 2D Seismic ✓
- Characterization / Monitoring Well ✓
- 3D Seismic ✓
- Class 6 Permit
- CI Activities/ Baseline Monitoring
- Drilling Injection Well
- Procure / Design Capture System
- Install Capture System



Trucks coming into our facility in Hennepin, IL.



ISCC Certified: International Sustainability and Carbon Certification



Model real farm inputs/and CI score from farm to plant to end user, through whole change – no default values.



Programs allow carbon incentives to flow through biofuel processors to farmers to improve carbon efficiency in agriculture.



Future paths forward, including a carbon audit program for farmers.

An underwater scene with sunlight rays filtering through the water from the surface. A large school of fish is swimming in the lower half of the frame. The text "LOW CARBON INTENSITY" is overlaid in the center.

LOW CARBON INTENSITY

The Future is Clean and Bright



Future Projects

- Diversification into Soybean Oil / Meal
- Sustainable Aviation Fuel (SAF)
- Blue Ammonia with CCS
- Blue Hydrogen Generation
- Direct Air Capture
- Carbon Neutral Bio-based Chemicals and Plastics



MARQUIS

Fueling a Carbon Conscious Future



Jared Walker,
Marquis Management
Director of Carbon Removal
jaredwalker@marquisenergy.com



MARQUIS